

Main technical characteristics

Characteristic	Value
Device	BCM2711, Quad core ARM Cortex-A72.
Server communication	VPN connection automatically established by the device.
Physical Communication	2 x USB A 3.0 2 x USB A 2.0 1 x RJ45 Ethernet 1 x PI Port Reader (RJ12)
Software-level Communication	OCPP 1.X Modbus TCP REST API Multiple transactional platforms API Possibility of adding Websockets or MQTT
Solution templates	Charging point, Energy measurements, heatpumps batteries, inverters, chargers...
Power Supply	5V DC via USB-C connector (minimum 3A)
Power Consumption	3-10W
Casing	Custom Casing
Dimensions	H 128 x W 128 x D 24 mm
Enclosure material	Certified Recycled PS

Integrating Energy Management with Market Access and Streamlined Control

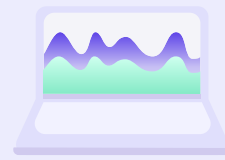
Smartmaster Home is an advanced energy management system, crafted for seamless integration with a wide range of energy assets.

This user-friendly White label app, not only monitors and controls energy usage for superior efficiency but also offers a multitude of energy services, including one-click access to the energy flex market.

Easy to install and compatible with various hardware brands, it supports multiple assets and platform protocols, facilitating smooth integration with electric vehicle charging stations and other energy assets.

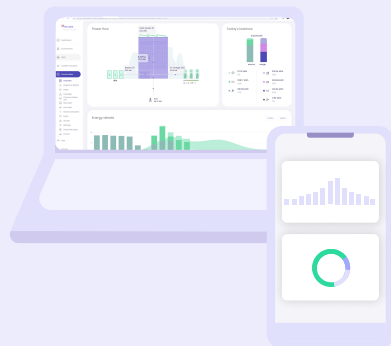
Architecture overview

Transactional services like
Fleet management, flex activation
mobility platforms, energy pooling



1 External platforms

Monitoring,
Configuration,
Dashboards,
Advanced
optimization,
Data transmission,
Energy services
activation and tuning

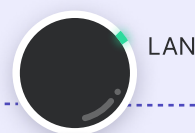


2 Smartmaster Home
White label app

Automatic VPN
MQTT & APIs

Local control
& communication

3 On site integration



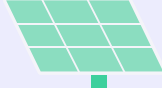
Modbus IP



Modbus IP



Modbus IP



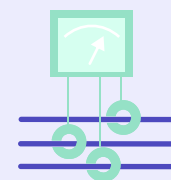
OCPP 1.5, 1.6
or Modbus IP



Smartbirds
P1 dongle
Wifi or LTEM



Modbus IP



IO via
Modbus IP
module

